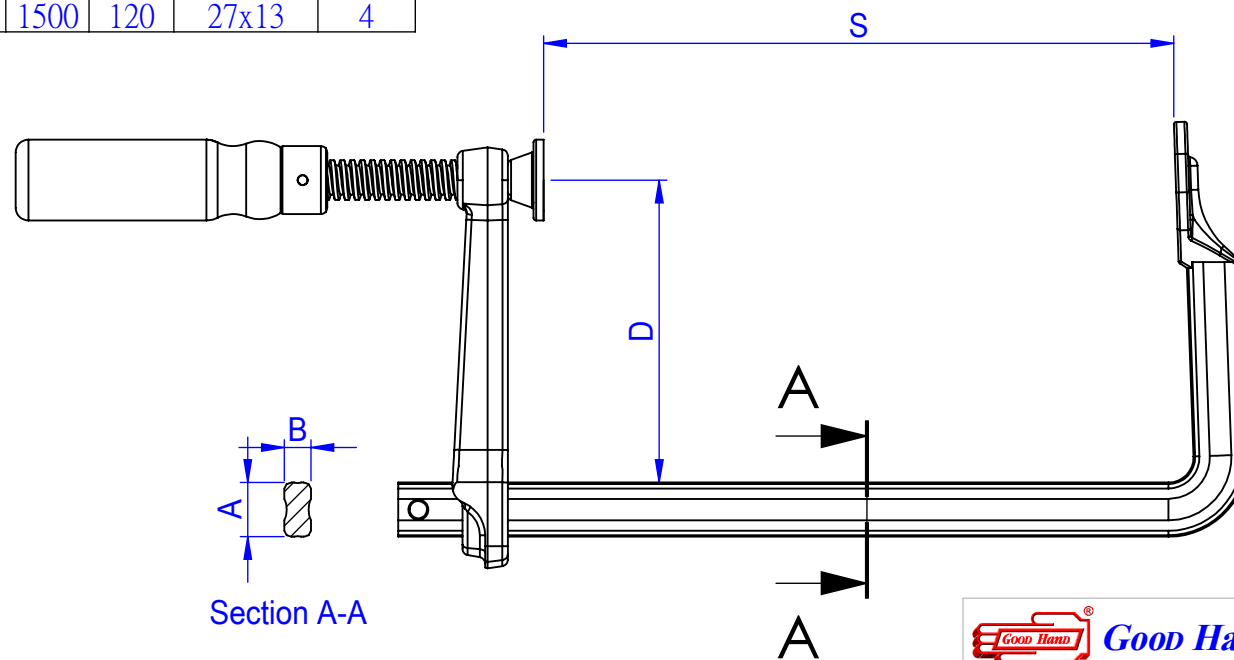
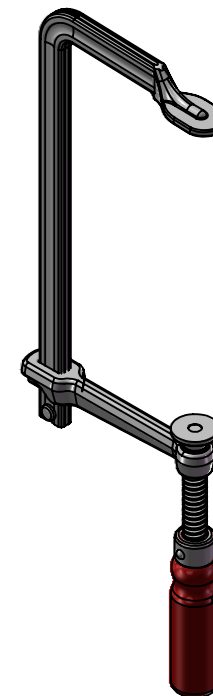


Part No.	Holding Capacity	Weight	S	D	RAIL	PACK
	Kg	Kg	mm	mm	AxB(mm)	pcs/ctn
GH-G12C	270	0.28	120	60	13.5x6.5	20
GH-G16C	300	0.5	160	80	16x7.5	10
GH-G20C	450	0.88	200	100	19.5x9.5	10
GH-G25C	550	1.23	250	120	22x10.5	10
GH-G30C	670	1.85	300	140	25x12	10
GH-G40C	700	2.57	400	175	27x13	10
GH-G60C	700	3.06	600	175	27x13	10
GH-G80C	700	3.55	800	175	27x13	6
GH-SG40C	750	1.97	400	120	25x12	10
GH-SG50C	750	2.18	500	120	25x12	10
GH-SG60C	750	2.39	600	120	25x12	10
GH-SG80C	1000	3.27	800	120	27x13	6
GH-SG100C	1000	3.75	1000	120	27x13	6
GH-SG125C	1000	4.38	1250	120	27x13	4
GH-SG150C	1000	4.9	1500	120	27x13	4



Unit:mm



 **Good Hand Enterprise Co., Ltd**

TITLE:

DWG NO. GH-G12C~GH-SG150C

A4