

GH-7 series

This range of clamps has been developed to withstand the most arduous welding conditions and are very well suited to repetitive production areas such as the automotive industry. They have the advantage of having the basic toggle mechanism, onto which the bar and handle can be welded at the desired position to suit the specific application.

Features include:

- Holding forces of up to 2000 kg can be achieved.
- Two types of base mounting are available;
 - (1) A short swivel base to allow the clamp to be mounted at an angle relative to the bar and handle.
 - (2) A long straight base to allow the mechanism to be welded directly on to a dedicated jig or fixture.
- All body and linkage components are drop forged high alloy steel for strength and rigidity.
- All pivot pins are manufactured from hardened and ground steel, and the main pivot pins run in hardened steel bushes to maintain accuracy and provide a long service life.
- Chemi-black surface finish to resist corrosion.

Flat Base Type



Weldable All Base
& Bar Type

GH 70305

- Holding Capacity 500kg
- Bar Opens 214°
- Handle Opens 134°
- Weight 0.75kg
- Handle $\varnothing 17.3 \times 125$ mm

GH 70505

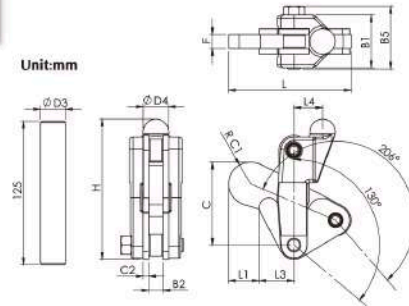
- Holding Capacity 1000kg
- Bar Opens 206°
- Handle Opens 130°
- Weight 1.36kg
- Handle $\varnothing 21.7 \times 125$ mm

GH 70605

- Holding Capacity 2000kg
- Bar Opens 206°
- Handle Opens 130°
- Weight 2.55kg
- Handle $\varnothing 27.2 \times 125$ mm

GH-70505

Unit:mm



Part No.	B1	B2	B5	C	C1	C2	D3	D4	F	H	L	L1	L3	L4
70305	37	10	44	51	13.5	4.8	17.3	19	10	100	79.5	15	24	21
70505	46	12.3	54.6	72.1	19	4.8	21.7	22	12.3	122.2	106.6	26.5	30.4	25
70605	51	16	65	91	22.8	5.8	27.2	29	16	151.4	133.2	33	40.4	32

GH 70310

- Holding Capacity 500kg
- Bar Opens 214°
- Handle Opens 134°
- Weight 0.8kg
- Handle $\varnothing 17.3 \times 125$ mm

GH 70510

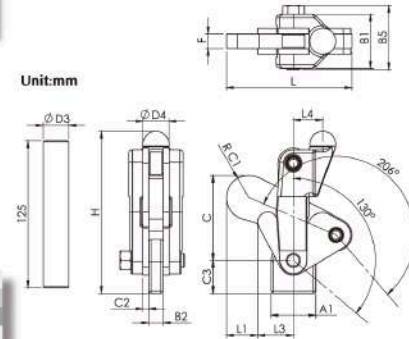
- Holding Capacity 1000kg
- Bar Opens 206°
- Handle Opens 130°
- Weight 1.51kg
- Handle $\varnothing 21.7 \times 125$ mm

GH 70610

- Holding Capacity 2000kg
- Bar Opens 206°
- Handle Opens 130°
- Weight 2.83kg
- Handle $\varnothing 27.2 \times 125$ mm

GH-70310

Unit:mm



Part No.	A1	B1	B2	B5	C	C1	C2	C3	D3	D4	F	H	L	L1	L3	L4
70310	28.6	37	10	44	51	13.5	4.8	20	17.3	19	10	109.5	79.5	15	24	21
70510	38	46	12.3	54.6	72.1	19	4.8	28	21.7	22	12.3	137.7	106.6	26.5	30.4	25
70610	50.4	51	16	65	91	22.8	5.8	33	27.2	29	16	167.9	133.2	33	40.4	32

GH 70315

- Holding Capacity 500kg
- Bar Opens 214°
- Handle Opens 134°
- Weight 0.9kg
- Handle $\varnothing 17.3 \times 125$ mm

GH 70515

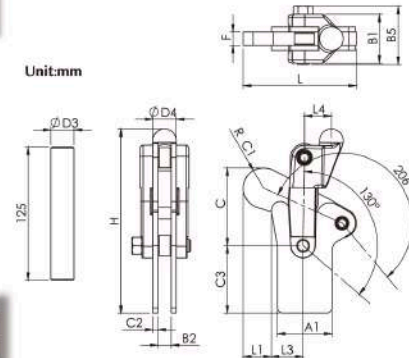
- Holding Capacity 1000kg
- Bar Opens 206°
- Handle Opens 130°
- Weight 1.62kg
- Handle $\varnothing 21.7 \times 125$ mm

GH 70615

- Holding Capacity 2000kg
- Bar Opens 206°
- Handle Opens 130°
- Weight 2.95kg
- Handle $\varnothing 27.2 \times 125$ mm

GH-70515

Unit:mm



Part No.	A1	B1	B2	B5	C	C1	C2	C3	D3	D4	F	H	L	L1	L3	L4
70315	45	37	10	44	51	13.5	4.8	50	17.3	19	10	139.5	79.5	15	24	21
70515	51	46	12.3	54.6	72.1	19	4.8	63.2	21.7	22	12.3	172.5	106.6	26.5	30.4	25
70615	63.5	51	16	65	91	22.8	5.8	76	27.2	29	16	210.9	133.2	33	40	32

GH 70710

- Holding Capacity 700kg
- Bar Opens 205°
- Handle Opens 130°
- Weight 0.9kg
- Handle $\varnothing 17.3 \times 125$ mm

GH 71210

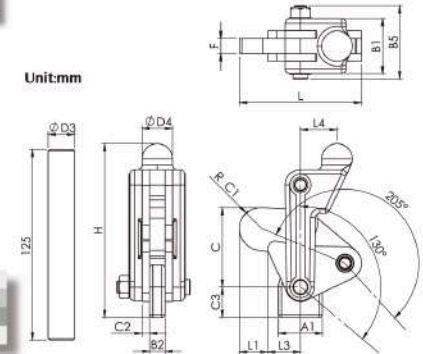
- Holding Capacity 1200kg
- Bar Opens 195°
- Handle Opens 130°
- Weight 1.58kg
- Handle $\varnothing 21.7 \times 125$ mm

GH 72410

- Holding Capacity 2400kg
- Bar Opens 195°
- Handle Opens 130°
- Weight 2.96kg
- Handle $\varnothing 27.2 \times 125$ mm

GH-71210

Unit:mm



Part No.	A1	B1	B2	B5	C	C1	C2	C3	D3	D4	F	H	L	L1	L3	L4
70710	29	36	10	48	52	14	5	20	17.3	20	10	114	80	18.5	21.5	24
71210	38	43	12	58	73	19	6	28	21.7	22	12	141	106	34.5	22.5	25
72410	52	51	16	67	91	22	8	33	27.2	30	16	177	130	36.1	35.9	32

GH 70715

- Holding Capacity 700kg
- Bar Opens 205°
- Handle Opens 130°
- Weight 1.01kg
- Handle $\varnothing 17.3 \times 125$ mm

GH 71215

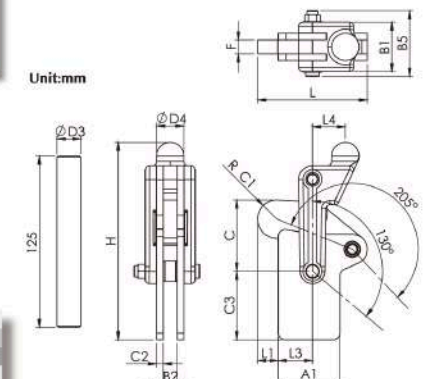
- Holding Capacity 1200kg
- Bar Opens 195°
- Handle Opens 130°
- Weight 1.75kg
- Handle $\varnothing 21.7 \times 125$ mm

GH 72415

- Holding Capacity 2400kg
- Bar Opens 195°
- Handle Opens 130°
- Weight 3.29kg
- Handle $\varnothing 27.2 \times 125$ mm

GH-70715

Unit:mm



Part No.	A1	B1	B2	B5	C	C1	C2	C3	D3	D4	F	H	L	L1	L3	L4
70715	45	36	10	48	52	14	5	20	17.3	20	10	144	80	15	25	24
71215	50	43	12	58	73	19	6	28	21.7	22	12	176	106	32	25	25
72415	63	51	16	67	91	22	8	33	27.2	30	16	220	130	32	40	32

GH 75027

- Holding Capacity 450kg
- Bar Opens 195°
- Handle Opens 59°
- Weight 1.19kg



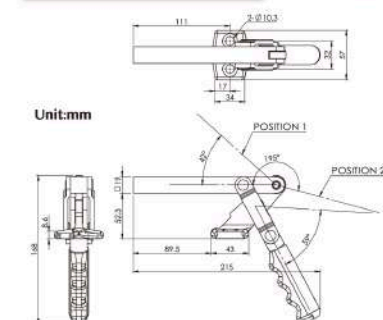
GH-75027

GH 75027-SM

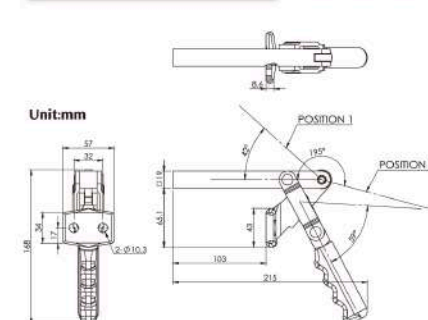
- Holding Capacity 450kg
- Bar Opens 195°
- Handle Opens 59°
- Weight 1.19kg



GHJ-75027-SM



Unit:mm



Unit:mm

GH 75048

- Holding Capacity 700Kg
- Bar Opens 195°
- Handle Opens 127°
- Weight 2.7Kg

GH 75078

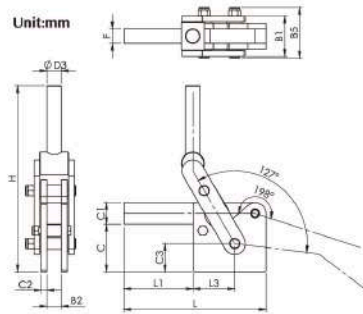
- Holding Capacity 1600Kg
- Bar Opens 198°
- Handle Opens 127°
- Weight 4.22Kg

GH 75088

- Holding Capacity 2500Kg
- Bar Opens 198°
- Handle Opens 127°
- Weight 6.55Kg

GH-75078

Unit:mm



Part No.	B1	B2	B5	C	C1	C2	C3	D3	F	H	L	L1	L3
75048	56	19	73.9	67.2	25.4	8	45.9	20	19	252	190.6	108	50
75078	65.2	22.2	83.1	69.6	32	9	43.6	22	22.2	276	219.1	117.5	57
75088	70	25.4	87.9	82.6	38	10	49.1	25.4	25.4	324	247.7	120.7	72.3

GH 70320

- Holding Capacity 300Kg
- Bar Opens 134°
- Handle Opens 210°
- Weight 0.29Kg
- Spindle Supplied SA-065010
- Flanged Washers FW-142

GH 70320-B

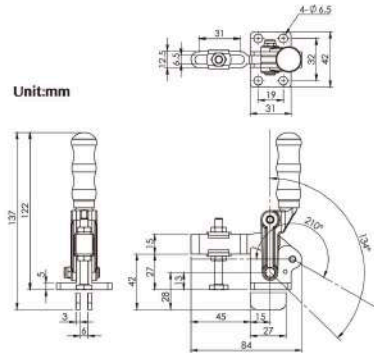
- Holding Capacity 300Kg
- Bar Opens 134°
- Handle Opens 210°
- Weight 0.31Kg
- Spindle Supplied SA-065010
- Flanged Washers FW-142

GH-70320

GH-70320-B



Unit:mm



GH 70300

- Holding Capacity 300Kg
- Bar Opens 134°
- Handle Opens 210°
- Weight 0.25Kg

GH 70300-B

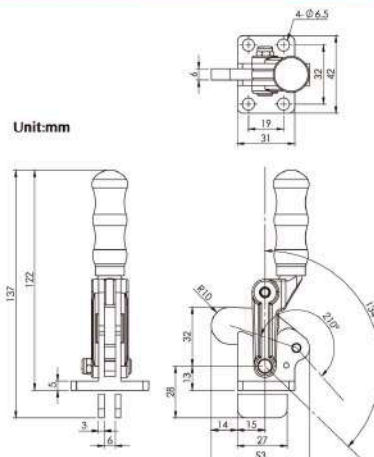
- Holding Capacity 300Kg
- Bar Opens 134°
- Handle Opens 210°
- Weight 0.27Kg

GH-70300

GH-70300-B



Unit:mm



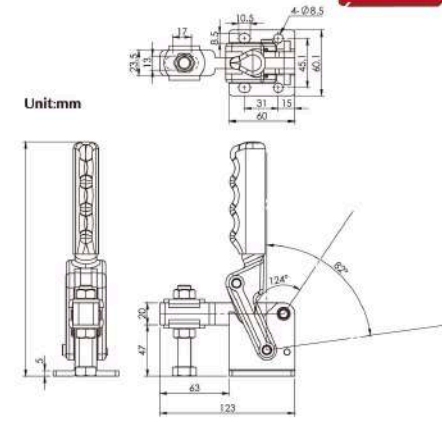
GH 70533

- Holding Capacity 700Kg
- Bar Opens 124°
- Handle Opens 82°
- Weight 1.26Kg
- Spindle Supplied SA-127517
- Flanged Washers FW-120

GH-70533



Unit:mm



GH 70720

- Holding Capacity 700Kg
- Bar Opens 130°
- Handle Opens 205°
- Weight 1.4Kg
- Spindle Supplied SA-121017

GH 71220

- Holding Capacity 1200Kg
- Bar Opens 130°
- Handle Opens 195°
- Weight 2.16Kg
- Spindle Supplied SA-121017

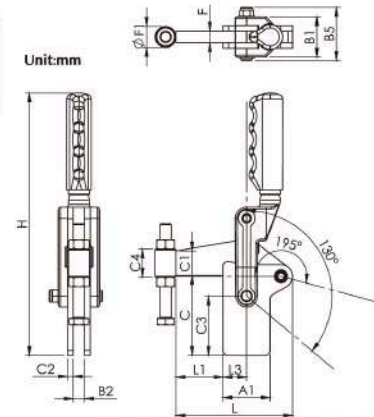
GH 72420

- Holding Capacity 2400Kg
- Bar Opens 130°
- Handle Opens 195°
- Weight 3.91Kg
- Spindle Supplied SA-161520

GH-71220



Unit:mm



Part No.	A1	B1	B2	B5	C	C1	C2	C3	C4	F	F1	H	L	L1	L3
70720	45	36	10	49.5	70	22	5	50	30	10	22.2	243	105	40	25
71220	30	43	12	56.5	85	26	6	63	30	12	22.2	279	124	50	25
72420	63	51	16	70.9	105	32	8	76	38	16	25.4	325	158	60	40

GH 70725

- Holding Capacity 700Kg
- Bar Opens 120°
- Handle Opens 180°
- Weight 1.24Kg
- Spindle Supplied SA-121017

GH 71225

- Holding Capacity 1200Kg
- Bar Opens 125°
- Handle Opens 180°
- Weight 2.14Kg
- Spindle Supplied SA-121017

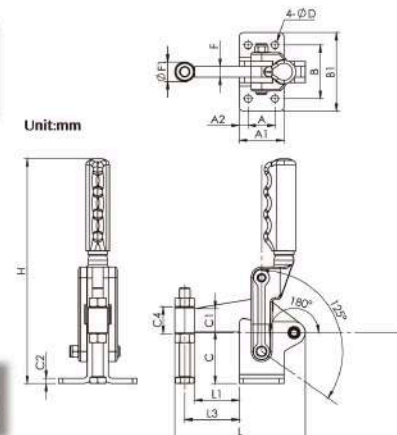
GH 72425

- Holding Capacity 2400Kg
- Bar Opens 130°
- Handle Opens 195°
- Weight 3.98Kg
- Spindle Supplied SA-161520

GH-70725



Unit:mm



Part No.	A	A1	A2	B	B1	C	C1	C2	C4	D	F	F1	H	L	L1	L3
70725	25	45	10	50	67	48	22	5	30	8.3	10	22.2	221	127.2	40	51.1
71225	30	50	10	60	88	58	26	6	30	8.3	12	22.2	252	146.2	50	61.1
72425	40	63	12	75	105	75	32	8	38	10.3	16	25.4	295	188	60	75

GH 702-C

- Holding Capacity 200kg
- Bar Opens 196°
- Handle Opens 122°
- Weight 0.61Kg
- Handle ∅17.3x150 mm

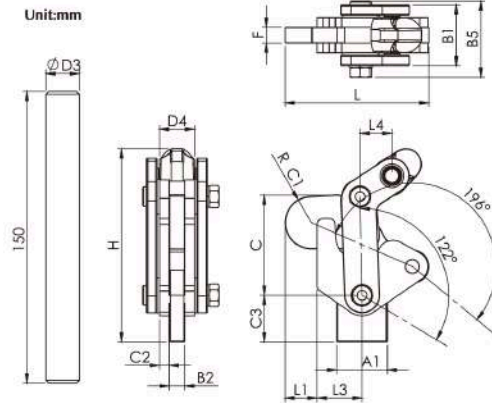
GH 702-D

- Holding Capacity 500kg
- Bar Opens 191°
- Handle Opens 122°
- Weight 1.51Kg
- Handle ∅21.7x150 mm

GH 702-K

- Holding Capacity 1000kg
- Bar Opens 197°
- Handle Opens 128°
- Weight 2.58Kg
- Handle ∅27.2x150 mm

GH-702-C



Part No.	A1	B1	B2	B5	C	C1	C2	C3	D3	D4	F	H	L	L1	L3	L4
702-C	26	31	8	39	51.5	13.5	4.5	24	17.3	18	8	99.4	74	16.5	23	16.4
702-D	37.1	41	13	52.5	73.8	19	6	33.7	21.7	24.5	13	139.8	97.6	24.6	24.2	25
702-K	50.4	47.6	16	60.2	91.6	25	6	37.2	27.2	31	16	172.5	122	26.4	35	31.3

GH 701-C

- Holding Capacity 200kg
- Bar Opens 196°
- Handle Opens 122°
- Weight 0.69Kg
- Handle ∅17.3x150 mm

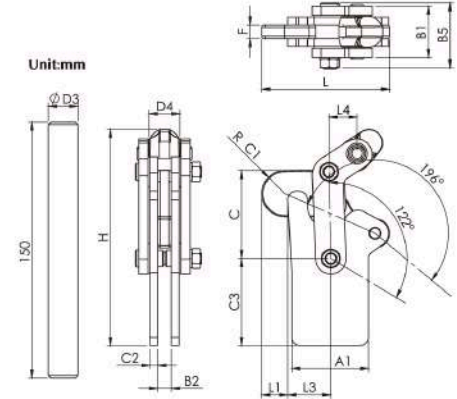
GH 701-D

- Holding Capacity 500kg
- Bar Opens 191°
- Handle Opens 122°
- Weight 1.62Kg
- Handle ∅21.7x150 mm

GH 701-K

- Holding Capacity 1000kg
- Bar Opens 197°
- Handle Opens 128°
- Weight 2.72Kg
- Handle ∅27.2x150 mm

GH-701-C



Part No.	A1	B1	B2	B5	C	C1	C2	C3	D3	D4	F	H	L	L1	L3	L4
701-C	45	30	8	38	51.5	13.5	4.5	51	17.3	18	8	126.6	74.9	15.2	25.3	16.4
701-D	50.5	41	13	52.5	73.8	19	6	66.8	21.7	24.5	13	173.4	97.3	24.6	24.2	25
701-K	63	47.6	16	60.2	91.6	25	6	78	27.2	31	16	214.4	122	26.4	35	31.3

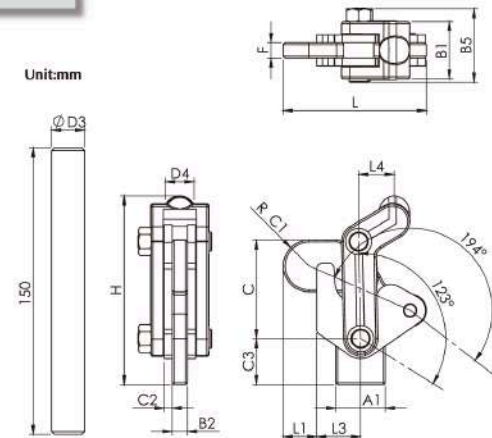
GH 70201

- Holding Capacity 200kg
- Bar Opens 194°
- Handle Opens 123°
- Weight 0.58Kg
- Handle ∅17.3x150 mm

GH 70203

- Holding Capacity 500kg
- Bar Opens 191°
- Handle Opens 122°
- Weight 1.41Kg
- Handle ∅21.7x150 mm

GH-70201



Part No.	A1	B1	B2	B5	C	C1	C2	C3	D3	D4	F	H	L	L1	L3	L4
70201	26	30	8	38	51.5	13.5	4.2	24	17.3	14.9	8	98.7	74.9	17.5	23	18.7
70203	37.1	41.5	13	50.8	73.8	19	5	33.7	21.7	24.5	13	142.1	97.3	24.6	24.2	23.6

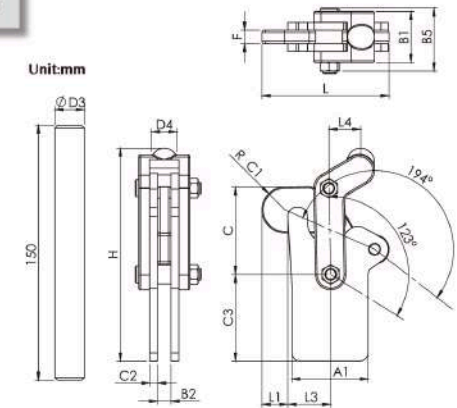
GH 70101

- Holding Capacity 200kg
- Bar Opens 194°
- Handle Opens 123°
- Weight 0.67Kg
- Handle ∅17.3x150 mm

GH 70103

- Holding Capacity 500kg
- Bar Opens 191°
- Handle Opens 122°
- Weight 1.49Kg
- Handle ∅21.7x150 mm

GH-70101



Part No.	A1	B1	B2	B5	C	C1	C2	C3	D3	D4	F	H	L	L1	L3	L4
70101	45	30	8	38	51.5	13.5	4.2	51	17.3	14.9	8	125.4	74.9	15.2	25.3	18.7
70103	50.5	42	13	53	73.8	19	5	66.8	21.7	24.5	13	175.2	97.3	24.6	24.2	23.6

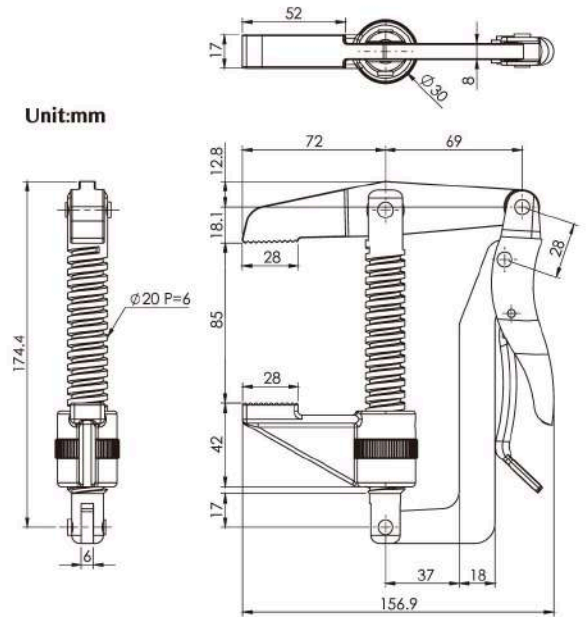
GH 80070

- Holding Capacity 200Kg
- Weight 0.93Kg
- Screw Stroke 85 mm



GH-80070

Unit:mm



GH 80325

- Holding Capacity 340Kg
- Jaw Opens 90°
- Handle Opens 50°
- Weight 0.48Kg
- Spindle Supplied SA-12212

GH 80379

- Holding Capacity 340Kg
- Jaw Opens 90°
- Handle Opens 50°
- Weight 0.53Kg
- Spindle Supplied SA-12212

GH 80325-SS (STAINLESS STEEL)

- Holding Capacity 340Kg
- Jaw Opens 90°
- Handle Opens 50°
- Weight 0.48Kg
- Spindle Supplied SA-12212-SS

GH 80379-SS (STAINLESS STEEL)

- Holding Capacity 340Kg
- Jaw Opens 90°
- Handle Opens 50°
- Weight 0.53Kg
- Spindle Supplied SA-12212-SS



GH-80379



GH-80325

Unit:mm

