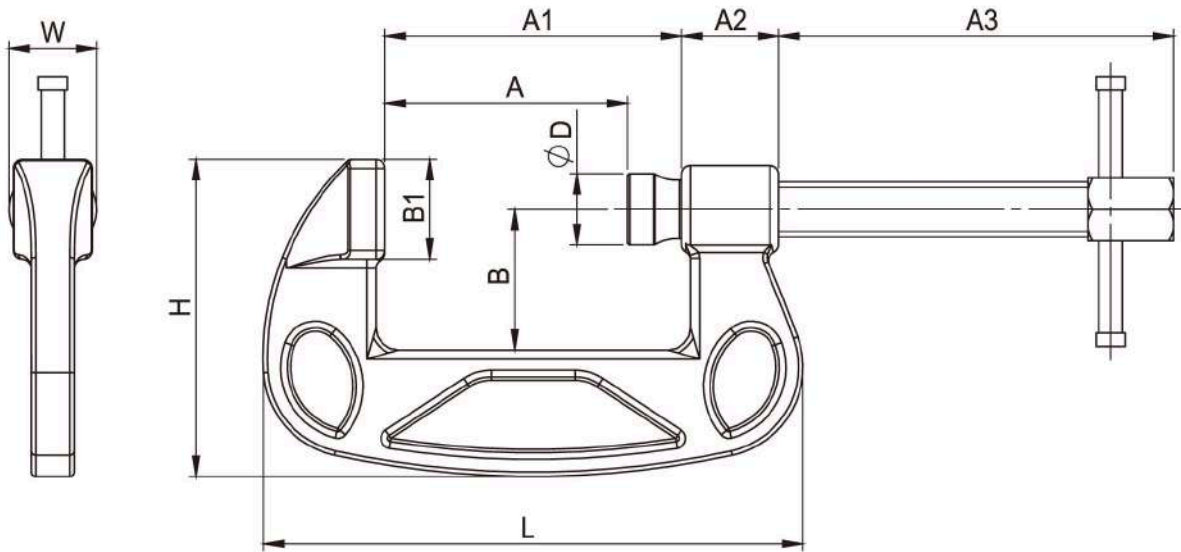




GH-C CLAMPS

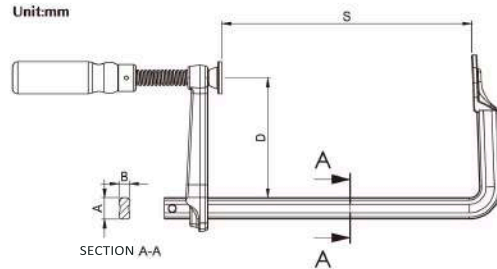
Unit:mm



Part No:	Size	Holding Capacity	Weight	A	A1	A2	A3	B	B1	Ø D	H	L	W	Material	Hardness
		kg	kg	mm	mm	mm	mm	mm	mm	mm	mm	mm	mm	Medium Carbon Steel	HRC38
M25	1"	1300	0.2	25.5	36	20	49	24.5	20	16	58	80	17.6		
M38	1-1/2"	1500	0.29	39	50	20	69	31	20	16	68	97	17.6		
M50	2"	2000	0.45	54	66	21.6	87.8	31.3	22.2	16	70.5	120	19.5		
M75	3"	2800	1.25	69.7	85.3	27	107.4	40	27.4	19	83.7	148.4	25		
M100	4"	3000	1.4	98.2	117.5	32.4	143	51.5	31.5	22.2	106	192.2	25.5		
M125	5"	3300	2.17	118.7	140	36.7	176.4	60.8	35.5	25	122.5	225	31		
M150	6"	3600	3.17	155	175	40	198.8	72.3	41.5	25	137.8	270	34		
M200	8"	6000	4.55	185.2	209.5	44	239.8	96	41.7	32	174.4	323	53.3		
M250	10"	7000	6.1	243.5	270	44.5	330	124	43	32	203	380	56.5		
M300	12"	8000	9	290	320	55	360	130	50	35	223	455	61		



GH-G12C-GH-SG150C

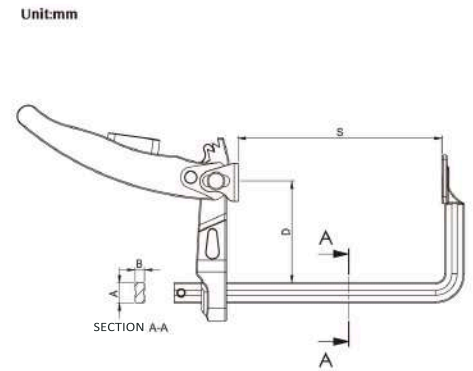


Part No:	Holding Capacity	Weight	S	D	RAIL	PACK
	Kg	Kg	mm	mm	AxB(mm)	pcs/ctn
G12C	270	0.28	120	60	13.5x6.5	10
G16C	300	0.5	160	80	16x7.5	10
G20C	450	0.88	200	100	19.5x9.5	10
G25C	550	1.23	250	120	22x10.5	10
G30C	670	1.85	300	140	25x12	10
G40C	700	2.57	400	175	27x13	10
G60C	700	3.06	600	175	27x13	6
G80C	700	3.55	800	175	27x13	6
SG40C	750	1.97	400	120	25x12	10
SG50C	750	2.18	500	120	25x12	10
SG60C	750	2.39	600	120	25x12	10
SG80C	1000	3.27	800	120	27x13	6
SG100C	1000	3.75	1000	120	27x13	6
SG125C	1000	4.35	1250	120	27x13	4
SG150C	1000	4.98	1500	120	27x13	4

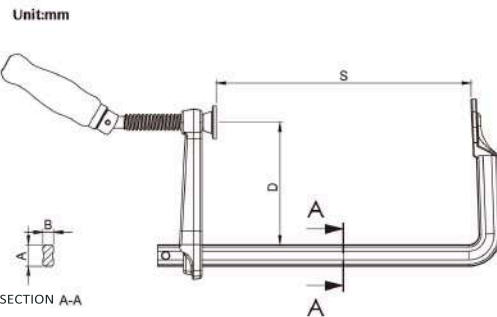


GH-G16L-GH-G100L

Part No:	Weight	S	D	RAIL	PACK	Holding Capacity
	Kg	mm	mm	AxB(mm)	pcs/ctn	Kgf
G16L	0.63	160	80	16 x 7.5	10	300
G20L	1.13	200	100	19.5 x 9.5	10	350
G25L	1.5	250	120	22 x 10.5	10	400
G30L	2.26	300	140	25 x 12	10	500
G40L	2.4	400	120	25 x 12	10	550
G50L	2.62	500	120	25 x 12	10	550
G60L	2.83	600	120	25 x 12	6	550
G80L	3.64	800	120	27 x 13	6	600
G100L	4.22	1000	120	27 x 13	6	600



REG-C Series

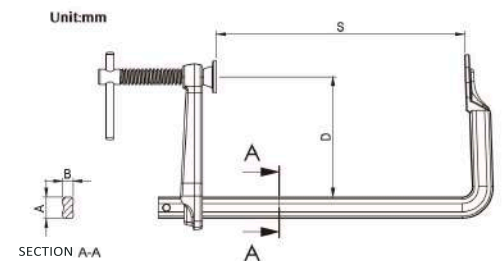


G-CS Series

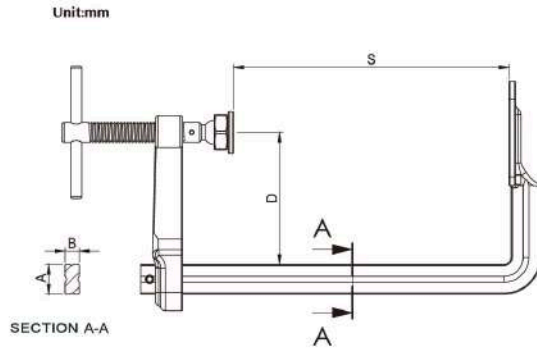
Part No:	Holding Capacity	Weight	S	D	RAIL	PACK		
	Kg	Kg	mm	mm	AxB(mm)	pcs/ctn		
REG16C	G16CS	300	0.59	0.5	160	80	16x7.5	10
REG20C	G20CS	450	0.98	0.88	200	100	19.5x9.5	10
REG25C	G25CS	550	1.33	1.23	250	120	22x10.5	10
REG30C	G30CS	670	1.98	1.85	300	140	25x12	10
REG40C	G40CS	700	2.7	2.57	400	175	27x13	10
REG60C	G60CS	700	3.19	3.06	600	175	27x13	6
REG80C	G80CS	700	3.68	3.55	800	175	27x13	6
REG40C	SG40CS	750	2.04	1.97	400	120	25x12	10
REG50C	SG50CS	750	2.25	2.18	500	120	25x12	10
REG60C	SG60CS	750	2.46	2.39	600	120	25x12	10
REG80C	SG80CS	1000	3.4	3.27	800	120	27x13	6
REG100C	SG100CS	1000	3.88	3.75	1000	120	27x13	6
REG125C	SG125CS	1000	4.5	4.38	1250	120	27x13	4
REG150C	SG150CS	1000	5.11	4.9	1500	120	27x13	4



GH-S15C6-GH-S30C10



Part No:	Holding Capacity	Weight	S	D	RAIL	PACK
	Kg	Kg	mm	mm	AxB(mm)	pcs/ctn
S15C6	600	0.72	150	60	19.5x9.5	10
S20C10	800	1.5	200	100	25x12	10
S25C10	800	1.61	250	100	25x12	10
S30C10	800	1.72	300	100	25x12	10

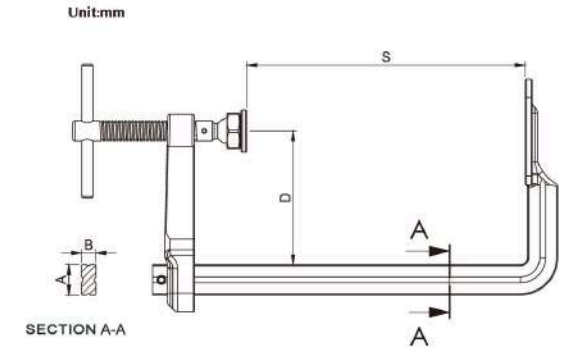


GH-S20C12~GH-S100C12

There are 3 types of clamping pad available for change.



Part No:	Holding Capacity		S	D	RAIL	PACK
	Kg	Kg				
S20C12	1000	1.97	200	120	27 x 13	10
S25C12	1000	2.09	250	120	27 x 13	10
S30C12	1000	2.21	300	120	27 x 13	10
S40C12	1000	2.46	400	120	27 x 13	10
S50C12	1000	2.71	500	120	27 x 13	10
S60C12	1000	2.96	600	120	27 x 13	6
S100C12	1000	3.88	1000	120	27 x 13	6

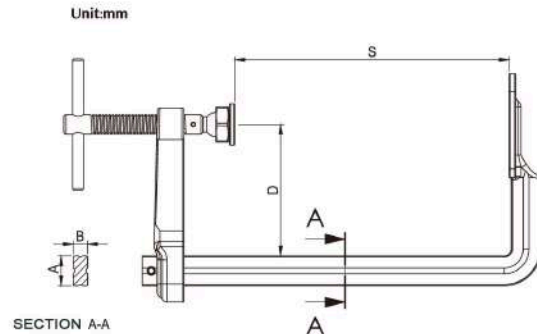


GH-SS30C~GH-SS150C

There are 3 types of clamping pad available for change.



Part No:	Holding Capacity		S	D	RAIL	PACK
	Kg	Kg				
SS30C	2200	5.5	300	175	40 x 20	4
SS40C	2200	6.06	400	175	40 x 20	4
SS50C	2200	6.62	500	175	40 x 20	4
SS60C	2200	7.18	600	175	40 x 20	4
SS80C	2200	8.3	800	175	40 x 20	2
SS100C	2200	9.43	1000	175	40 x 20	2
SS125C	2200	10.83	1250	175	40 x 20	2
SS150C	2200	12.05	1500	175	40 x 20	2



GH-GS25C~GH-GS150C

There are 3 types of clamping pad available for change.



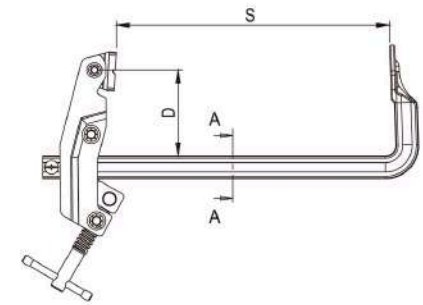
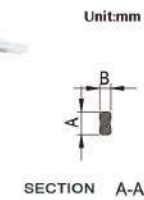
Part No:	Holding Capacity		S	D	RAIL	PACK
	Kg	Kg				
GS25C	1200	2.76	250	120	30 x 15	6
GS30C	1200	2.96	300	140	30 x 15	6
GS40C	1200	3.2	400	120	30 x 15	6
GS50C	1200	3.66	500	140	30 x 15	6
GS60C	1200	3.87	600	120	30 x 15	6
GS80C	1200	4.62	800	140	30 x 15	6
GS100C	1200	5.15	1000	120	30 x 15	4
GS125C	1200	5.94	1250	120	30 x 15	4
GS150C	1200	6.65	1500	120	30 x 15	4



GH-CTL series-1



GH-CTL series-2



GH-CTD



GH-CTV

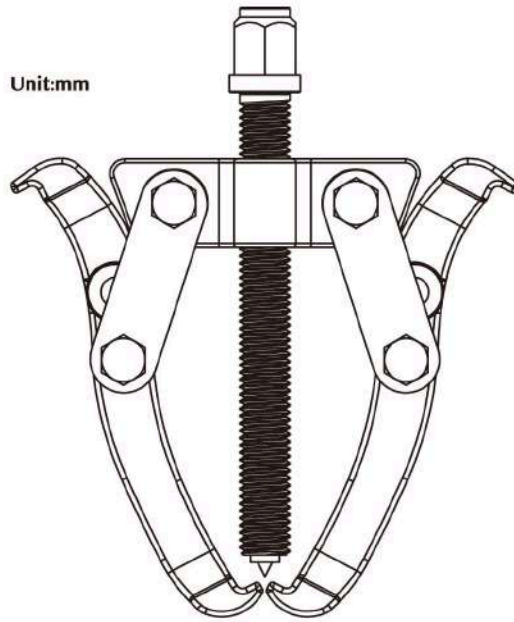
Part No:	Holding Capacity		S	D	RAIL	PACK
	Kg	Kg				
CTL15	600	1.36	130	80	22 x 10.5	10
CTL20	600	1.44	200	80	22 x 10.5	10
CTL30	700	2.72	300	100	27 x 13	6
CTL50	600	1.93	500	80	22 x 10.5	10
CTL60	700	3.46	600	100	27 x 13	6
CTL80	600	2.42	800	80	22 x 10.5	10
CTL100	700	4.41	1000	100	27 x 13	6
CTD1					for rail 22 mm	1
CTD2					for rail 27 mm	1
CTV						1

* CTD1 - CTD2 and CTV are optional parts.



TWO-JAW GEAR PULLER

Unit:mm

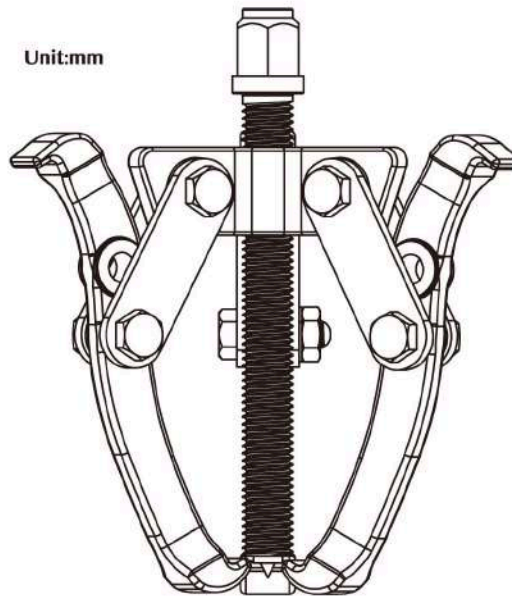


Part No:	Description	Size	Spread	Reach	Thread Length	Hex Head
P0752		3"	40-75	60	45	14
P1002	CR.V. FORGED HARDENED	4"	50-100	70	55	17
P1502	JAWS CHROME PLATED	6"	60-150	120	95	19
P2002		8"	80-200	175	135	23
P3002		12"	120-300	215	170	32



THREE-JAW GEAR PULLER

Unit:mm



Part No:	Description	Size	Spread	Reach	Thread Length	Hex Head
P0753		3"	40-75	60	45	14
P1003	CR.V. FORGED HARDENED	4"	50-100	70	55	17
P1503	JAWS CHROME PLATED	6"	60-150	120	95	19
P2003		8"	80-200	175	135	23
P3003		12"	120-300	215	170	32