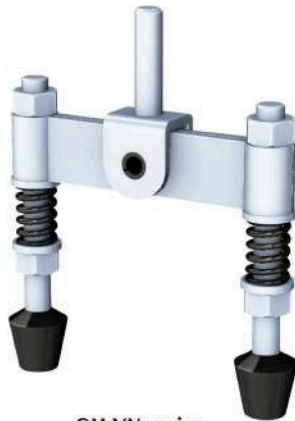


YOKE ASSEMBLIES

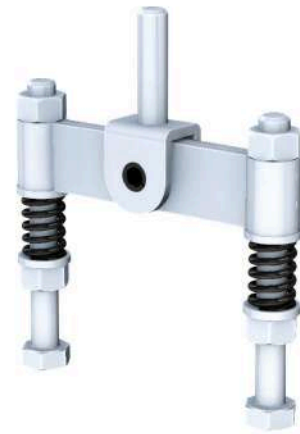
TOGGLE CLAMPS



GH-YP series



GH-YN series



GH-YB series



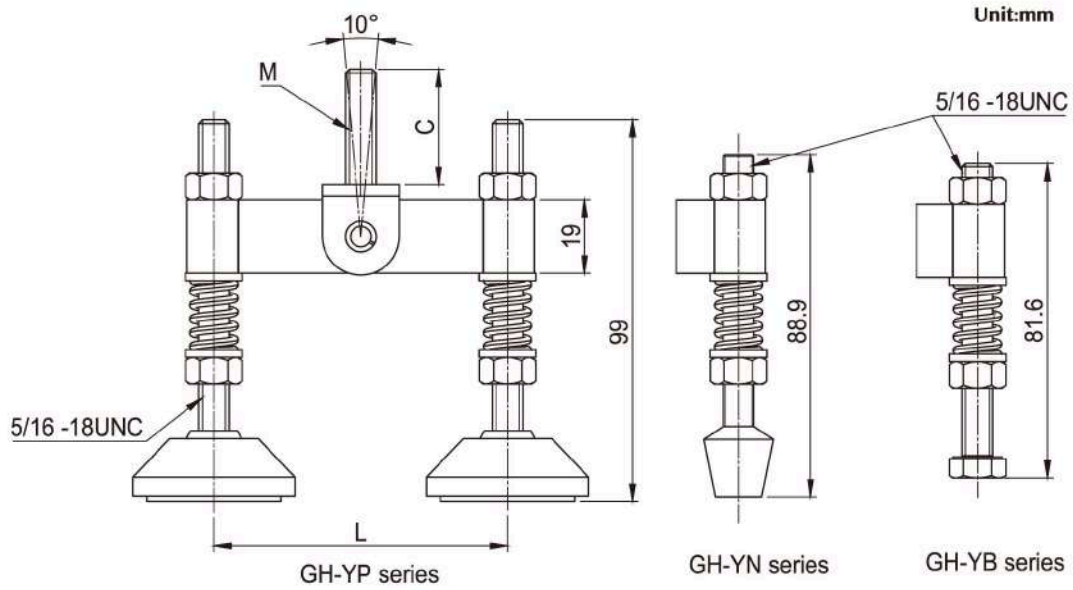
GH-12130-HB+GH-YP



GH-200-WH+GH-YN



GH-304-E+GH-YB



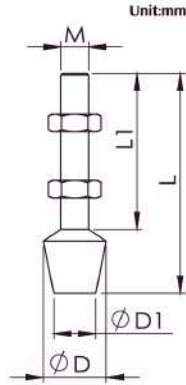
Plastic Pad Part No.	Neoprene Cap Part No.	Plain Spindle Part No.	L	M (metric size is available)	C
YP-3130	YN-3130	YB-3130	76.2 [3"]	5/16"-18(M8)	30
YP-3160	YN-3160	YB-3160	152.4 [6"]	5/16"-18(M8)	30
YP-3730	YN-3730	YB-3730	76.2 [3"]	3/8"-16(M10)	35
YP-3760	YN-3760	YB-3760	152.4 [6"]	3/8"-16(M10)	35

NEOPRENE TIPPED SPINDLES



Part No. - METRIC	M	L	L1	D	D1
FC-042507/FC-043207-SS	M4 P=0.7	25	15	12	8
FC-043207	M4 P=0.7	32	22	12	8
FC-043207-LP	M4 P=0.7	34	28	9.6	-
FC-044207	M4 P=0.7	42	32	12	8
FC-053008	M5 P=0.8	31	21	13	10
FC-053708-LP	M5 P=0.8	37	31	10.6	-
FC-053808	M5 P=0.8	38	28	13	10
FC-064410	M6 P=1.0	44	30	16	10
FC-065110/FC-065110-SS	M6 P=1.0	51	37	16	10
FC-086312/FC-086312-SS	M8 P=1.25	63	44	19	12.5
FC-087512	M8 P=1.25	75	56	19	12.5
FC-081212	M8 P=1.25	123	104	19	12.5
FC-108515/FC-108515-SS	M10 P=1.5	85	59	24	16
FC-121017	M12 P=1.75	100	74	30.5	24.5

Part No. - IMPERIAL	M	L	L1	D	D1
FC-10138	#10 - 24UNC	37	26	13.8	11
FC-10138-LP	#10 - 24UNC	35	29	10.6	-
FC-14134	1/4" - 20UNC	46.6	32.6	16.8	11.2
FC-14214	1/4" - 20UNC	57.4	44.4	16.8	11.2
FC-56212	5/16" - 18UNC	63.5	45	18	12
FC-56300	5/16" - 18UNC	76.2	57.7	18	12
FC-38312	3/8" - 16UNC	88.9	63.4	22	14
FC-38412	3/8" - 16UNC	115.5	90	22	14
FC-12334	1/2" - 13UNC	95	69	30.5	24.5



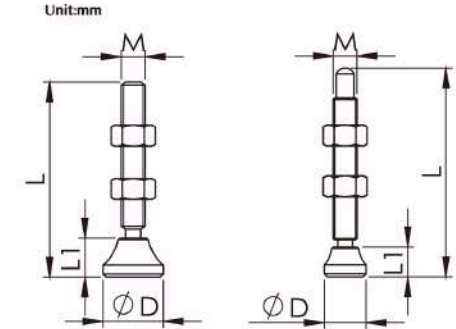
GH-FC-SS : NEOPRENE TIPPED STAINLESS STEEL SPINDLES

SWIVEL FOOT SPINDLES



GH-SF-METRIC series

GH-SF-UNC series



Part No.	METRIC			
	M	L	D(mm)	L1(mm)
SF-05035	M5 P=0.8	35mm	12	10
SF-06050	M6 P=1.0	50mm	12	10
SF-08065	M8 P=1.25	65mm	20	15
SF-10085	M10 P=1.5	85mm	20	15
SF-12100	M12 P=1.75	100mm	25	20
SF-16150	M16 P=2.0	150mm	45	30

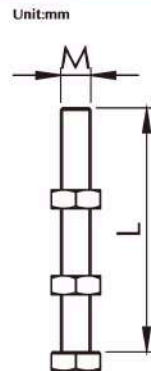
Part No.	IMPERIAL			
	M	L	D(mm)	L1(mm)
SF-14214	1/4" - 20UNC	2-1/4"	12.7	9.4
SF-56234	5/16" - 18UNC	2-3/4"	14	10
SF-38300	3/8" - 16UNC	3"	16	10.9
SF-12400	1/2" - 13UNC	4"	19	11.8

STANDARD SPINDLES

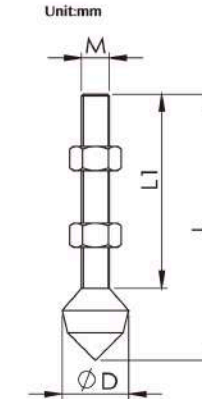


METRIC	
Part No.	Description(M x L)
SA-041507	M4 x 15mm
SA-042007(Nylon)/SA-042007-SS	M4 x 20mm
SA-042507	M4 x 25mm
SA-044007	M4 x 40mm
SA-051508	M5 x 15mm
SA-054008	M5 x 40mm
SA-064010/SA-064010-SS	M6 x 40mm
SA-065010/SA-065010-SS	M6 x 50mm
SA-083012	M8 x 30mm
SA-085012/SA-085012-SS	M8 x 50mm
SA-086512	M8 x 65mm
SA-105015/SA-105015-SS	M10 x 50mm
SA-107515	M10 x 75mm
SA-109015	M10 x 90mm
SA-125017	M12 x 50mm
SA-121017	M12 x 100mm

IMPERIAL	
Part No.	Description(M x L)
SA-08034(Nylon)	#8 - 32UNC x 3/4"
SA-10118	#10 - 24UNC x 1-1/8"
SA-14112	1/4" - 20UNC x 1-1/2"
SA-14134/SA-14134-SS	1/4" - 20UNC x 1-3/4"
SA-56200	5/16" - 18UNC x 2"
SA-56212	5/16" - 18UNC x 2-1/2"
SA-38300	3/8" - 16UNC x 3"
SA-38400	3/8" - 16UNC x 4"
SA-12300	1/2" - 13UNC x 3"
SA-12412	1/2" - 13UNC x 4-1/2"
SA-58500	5/8" - 11UNC x 5"

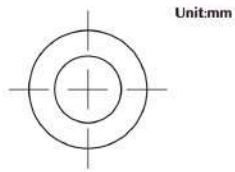


CONE CUSHION-TIP BONDED NEOPRENE CAP

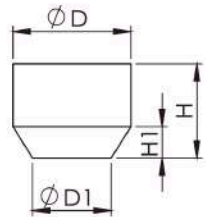


Part No. - IMPERIAL	M	L	L1	D
CC-10138	#10 - 24UNC	34.9	22.2	14.3
CC-14134	1/4" - 20UNC	44.5	26.5	19.1
CC-14214	1/4" - 20UNC	57.2	39.7	19.1
CC-14218	1/4" - 20UNC	54	36.5	19.1
CC-56212	5/16" - 18UNC	63.5	44	19.1
CC-56300	5/16" - 18UNC	76.2	56.5	19.1
CC-38312	3/8" - 16UNC	88.9	67	22.2

NEOPRENE CAPS FOR STANDARD SPINDLES

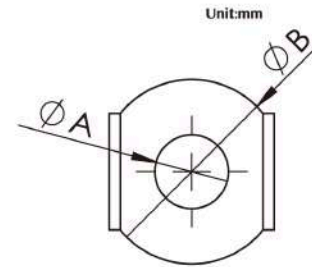


Unit:mm

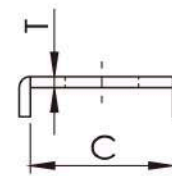


METRIC					
Part No.	Description	D	D1	H	H1
NC-04	For M4 spindles	11	7	8.5	4
NC-05	For M5 spindles	12.5	8	10	4
NC-06	For M6 spindles	15	10	12	4
NC-08	For M8 spindles	19	13	15	6
NC-10	For M10 spindles	22	15	17.5	7
NC-12	For M12 spindles	26	19	20	7
NC-16	For M16 spindles	33	24	27	8
IMPERIAL					
Part No.	Description	D	D1	H	H1
NC-140	For 1/4" spindles	15	10	12	4
NC-516	For 5/16" spindles	19	-	12.5	-
NC-380	For 3/8" spindles	22	15	17.5	7
NC-120	For 1/2" spindles	29	-	16	-

FLANGED WASHERS



Unit:mm

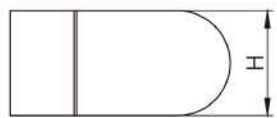
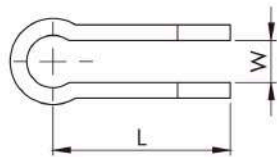


Part No.	Description	A	B	C	T
FW-080 / FW-080-SS	For 4mm & #8 spindles	4.3	12.7	8.3	1
FW-100 / FW-100-SS	For 5mm & #10 spindles	5	12.6	9.3	1.2
FW-140 / FW-140-SS	For 6mm & 1/4" spindles	6.3	14	12	1.5
FW-142 / FW-142-SS	For 6mm & 1/4" spindles	6.3	15	13.5	1.5
FW-516 / FW-516-SS	For 8mm & 5/16" spindles	8.3	22	15.6	2
FW-380 / FW-380-SS	For 10mm & 3/8" spindles	10	25	19.4	2
FW-120	For 12mm & 1/2" spindles	13	33	24	3
FW-580	For 16mm & 5/8" spindles	16.2	35	27.4	3

GH-FW-SS : STAINLESS STEEL FLANGED WASHERS

BOLT RETAINERS

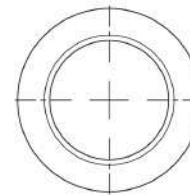
Unit:mm



Part No.	Description	H	L	W
BR-140	For 6mm & 1/4" spindles	12.7	25.5	5
BR-516	For 8mm & 5/16" spindles	15.9	25.3	6.5
BR-380	For 10mm & 3/8" spindles	20	32	8
BR-120	For 12mm & 1/2" spindles	23.2	31.8	10
BR-580	For 16mm & 5/8" spindles	32	39	10

PLASTIC COVERS FOR SWIVEL FOOT SPINDLES

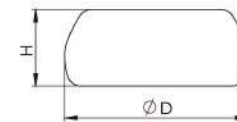
Unit:mm



GH-NPC-0810



GH-NPC-0506



Part No.	Description	ØD	H
GH-NPC-0506	Fits M5/M6 Swivel Foot Spindles	16	6
GH-NPC-0810	Fits M8/M10 Swivel Foot Spindles	24	10