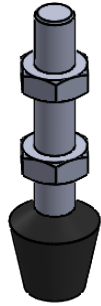
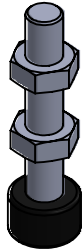


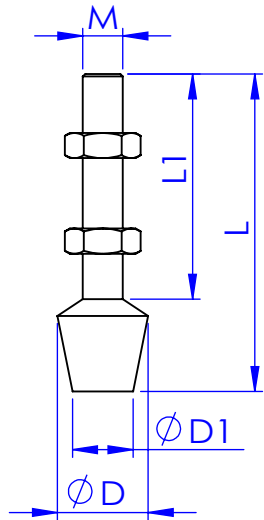
# Neoprene Tipped Spindles



FC series



FC-LP series



Part No. - METRIC	M	L	L1	D	D1
GH-FC-042507/ GH-FC-042507-SS	M4 P=0.7	25	15	12	8
GH-FC-043207	M4 P=0.7	32	22	12	8
GH-FC-043207-LP	M4 P=0.7	34	28	10.8	-
GH-FC-044207	M4 P=0.7	42	32	12	8
GH-FC-053008	M5 P=0.8	31	21	13	10
GH-FC-053708-LP	M5 P=0.8	37	31	10.8	-
GH-FC-053808	M5 P=0.8	38	27	13.5	11.3
GH-FC-054008	M5 P=0.8	41	31	13	10
GH-FC-064410	M6 P=1.0	44	30	16	10
GH-FC-065110/ GH-FC-065110-SS	M6 P=1.0	51	37	16	10
GH-FC-086312/ GH-FC-086312-SS	M8 P=1.25	63	44	19	12.5
GH-FC-087512	M8 P=1.25	75.5	57	19	12.5
GH-FC-081212	M8 P=1.25	123	104	19	12.5
GH-FC-108515/ GH-FC-108515-SS	M10 P=1.5	85	59	24	16
GH-FC-121017	M12 P=1.75	100	74	30.5	24.5

Part No. - IMPERIAL	M	L	L1	D	D1
GH-FC-10138	#10 - 24UNC	37	26	13.8	11
GH-FC-10138-LP	#10 - 24UNC	35	29	10.8	-
GH-FC-14134	1/4" - 20UNC	46.6	33.4	16.2	11
GH-FC-14214	1/4" - 20UNC	57.4	44.2	16.2	11
GH-FC-56212	5/16" - 18UNC	63.5	45	18	12
GH-FC-56300	5/16" - 18UNC	76.2	57.7	18	12
GH-FC-38312	3/8" - 16UNC	88.9	63.4	22	14
GH-FC-38412	3/8" - 16UNC	115.5	90	22	14
GH-FC-12334	1/2" - 13UNC	95	69	30.5	24.5

Unit:mm

**GH-FC-SS : NEOPRENE TIPPED STAINLESS STEEL SPINDLES**



**Good Hand Enterprise Co., Ltd**

TITLE:		
DWG NO.	GH-FC series	A4