

Part No.	Holding Capacity	Weight	S	D	RAIL	PACK
	Kg	Kg	mm	mm	AxB(mm)	pcs/ctn
GH-S20C12	1000	1.97	200	120	27 x 13	10
GH-S25C12	1000	2.09	250	120	27 x 13	10
GH-S30C12	1000	2.21	300	120	27 x 13	10
GH-S40C12	1000	2.46	400	120	27 x 13	10
GH-S50C12	1000	2.71	500	120	27 x 13	10
GH-S60C12	1000	2.96	600	120	27 x 13	10

There are 3 types of clamping pad available for change.



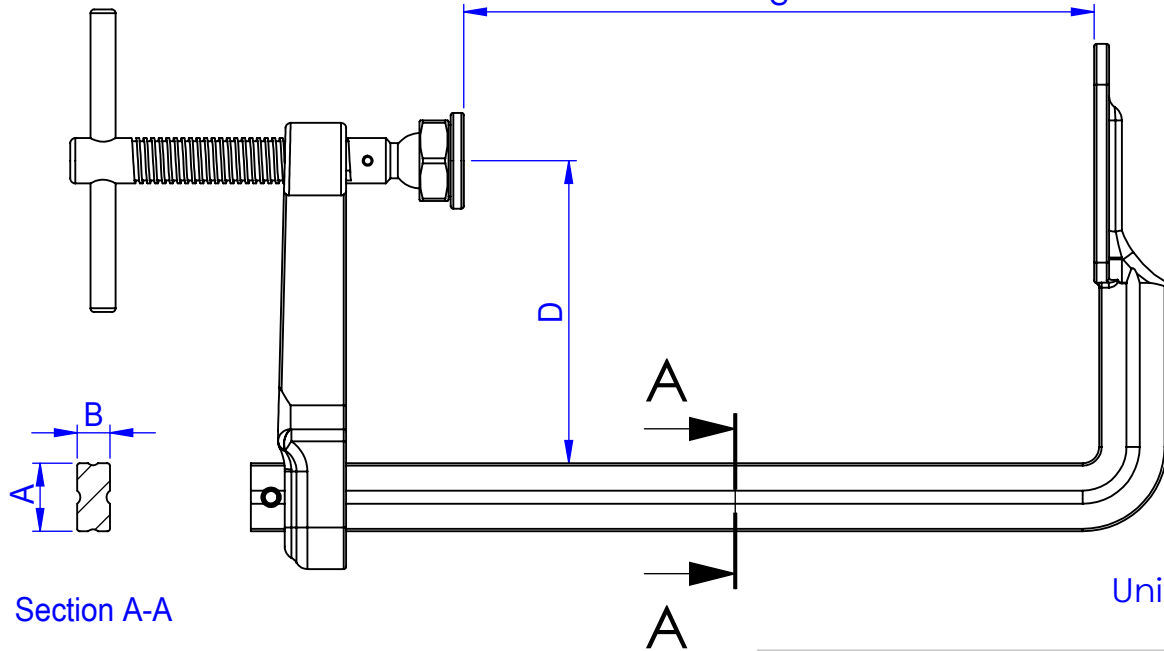
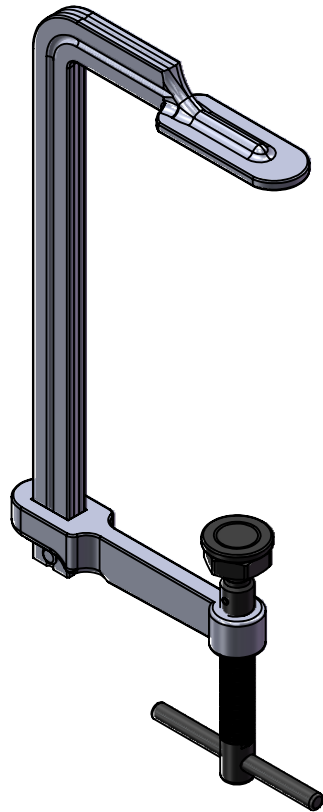
P PAD



R PAD



V PAD



 **Good Hand Enterprise Co., Ltd**

TITLE:

DWG NO. GH-S20C12~GH-S100C12

A4