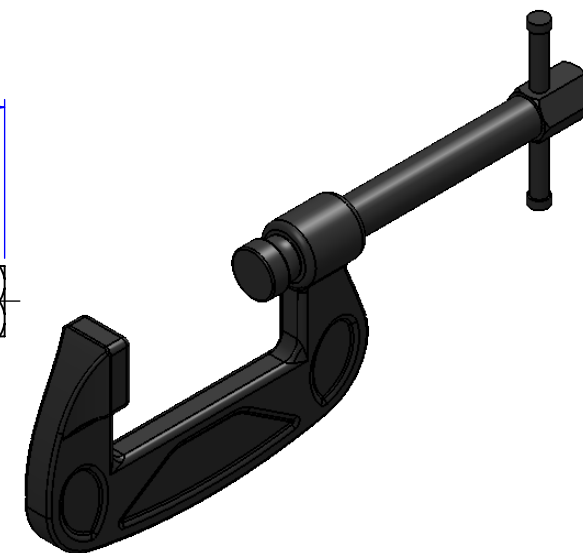
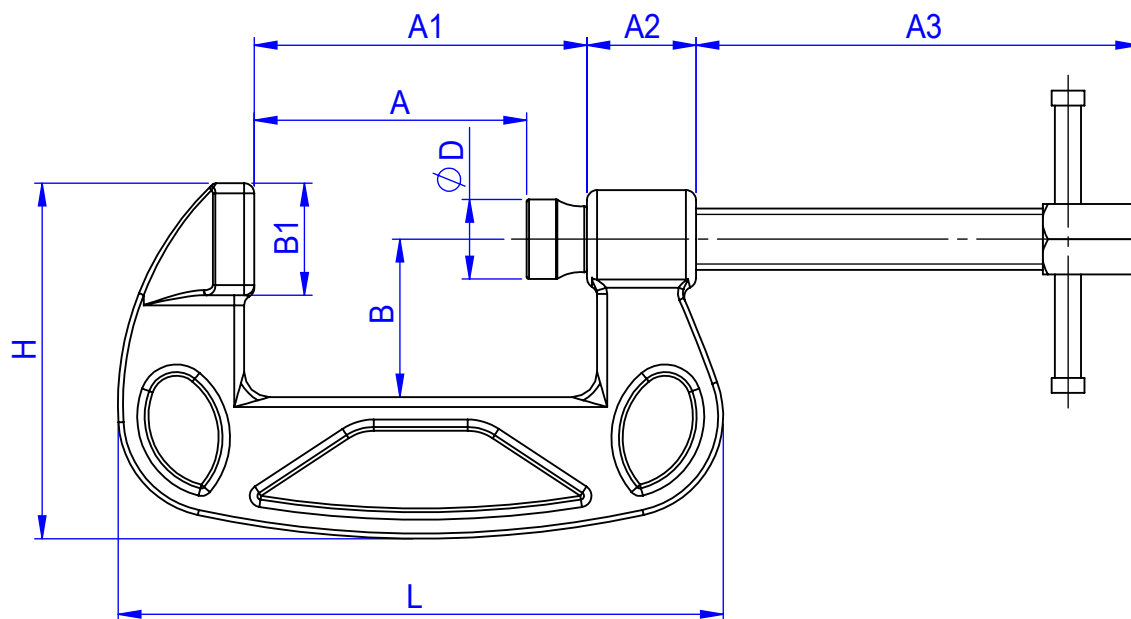
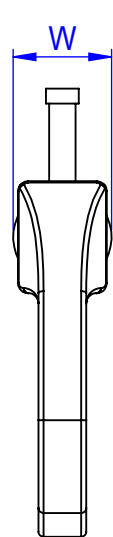


Part No.	Size	Holding Capacity	Weight	A	A1	A2	A3	B	B1	ϕD	H	L	W	Material	Hardness
		Kg	Kg	mm	mm	mm	mm	mm	mm	mm	mm	mm	mm		
GH-M25	1"	1300	0.2	25.5	36	20	49	24.5	20	16	58	80	17.6	Medium Carbon Steel	HRC38°
GH-M38	1-1/2"	1500	0.29	39	50	20	69	31	20	16	68	97	17.6		
GH-M50	2"	2000	0.45	54	66	21.6	87.8	31.3	22.2	16	70.5	120	19.5		
GH-M75	3"	2800	1.25	69.7	85.3	27	107.4	40	27.4	19	83.7	148.4	25		
GH-M100	4"	3000	1.4	98.2	117.5	32.4	143	51.5	31.5	22.2	106	192.2	25.5		
GH-M125	5"	3300	2.17	118.7	140	36.7	176.4	60.8	35.5	25	122.5	225	31		
GH-M150	6"	3600	3.17	155	175	40	198.8	72.3	41.5	25	137.8	270	34		
GH-M200	8"	6000	4.55	185.2	209.5	44	239.8	96	41.7	32	174.4	323	53.3		
GH-M250	10"	7000	6.1	243.5	270	44.5	330	124	43	32	203	380	56.5		
GH-M300	12"	8000	9	290	320	55	360	130	50	35	223	455	61		



Unit:mm



Good Hand Enterprise Co., Ltd

TITLE:

DWG NO.

C CLAMPS

A4